

November 8, 2022

Press Release

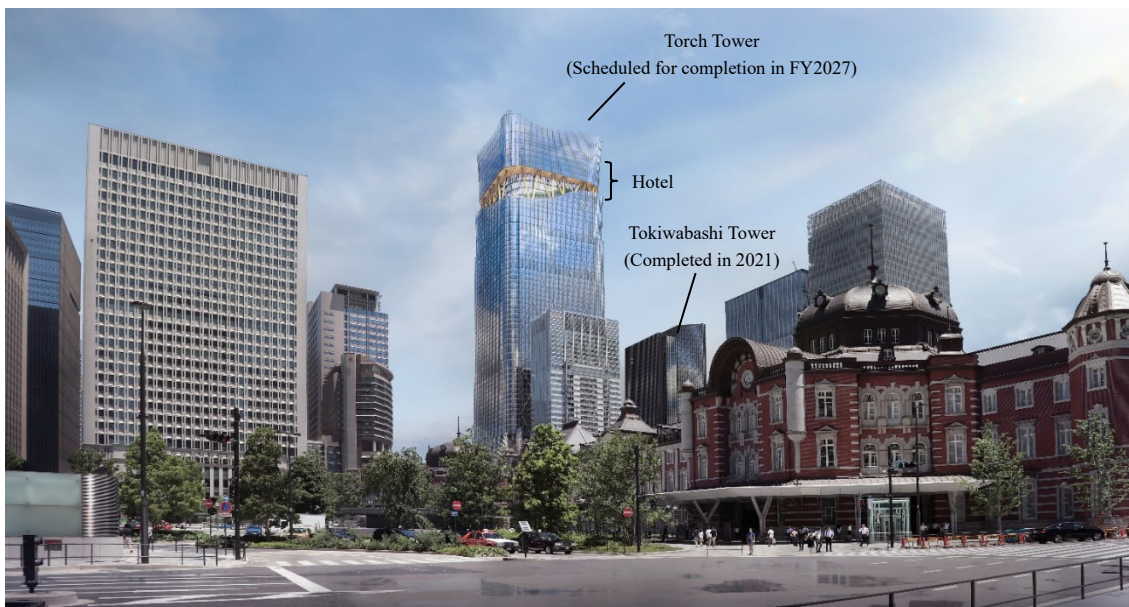
Mitsubishi Estate Co., Ltd.
Tokyo Century Corporation
Dorchester Collection

TOKYO TORCH, A New Landmark in Japan Beckoning the World
The legendary-luxury brand Dorchester Collection will open its first hotel in Asia within Torch Tower, the tallest building in Japan

Mitsubishi Estate Co., Ltd. and Tokyo Century Corporation announce today that Dorchester Collection, one of the world's leading luxury brands, has been selected to manage the hotel within "Torch Tower", the highest building in Japan. The hotel is scheduled to open in 2028.

Award-winning Dorchester Collection currently comprises nine iconic hotels in London, Paris, Milan, Rome, and Los Angeles. Next year the company will open its first hotel in the Middle East, The Lana, Dubai. Each of these hotels has a strong individuality rooted in the city's culture and heritage, and forms an integral part of the local community. The highly anticipated hotel in Torch Tower will be the first Dorchester Collection hotel in Asia[※], offering gracious Japanese hospitality, combined with the brand's elevated service and experiences.

[※]Note: "First in Asia" based on the assignment of countries to the Asian region on the website of Japan's Ministry of Foreign Affairs.



▲ Exterior image of the TOKYO TORCH district on opening (from Marunouchi side of JR Tokyo Station)

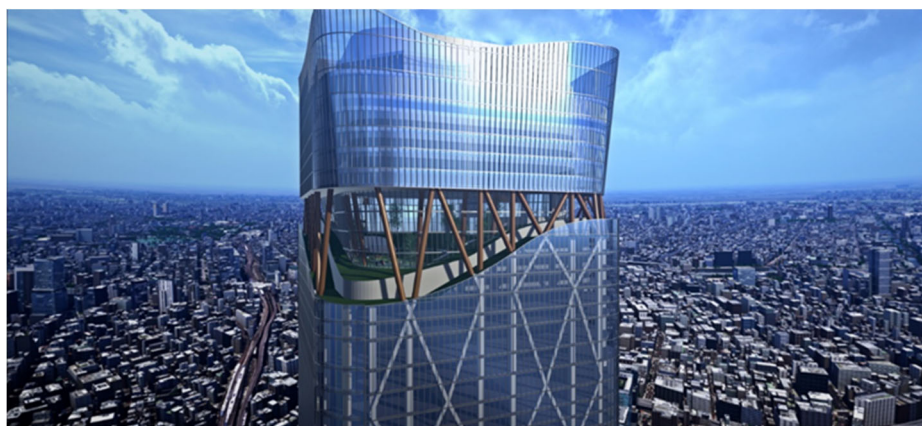
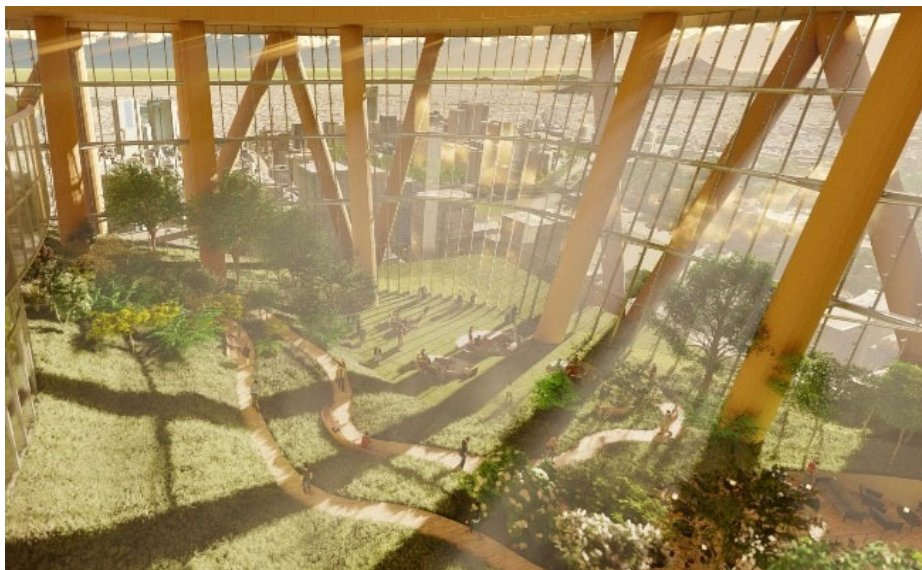
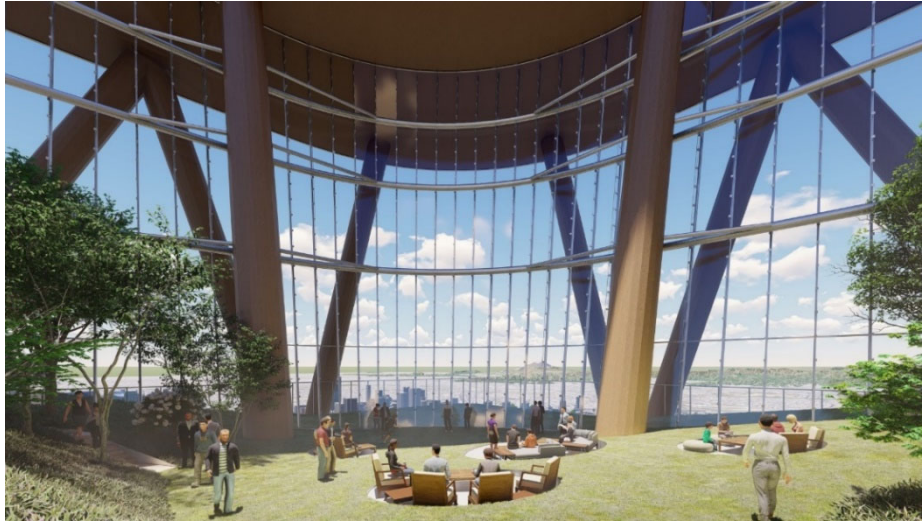
For further information

Corporate Communications Department, Mitsubishi Estate Co., Ltd. Tel: +81-3-3287-5200

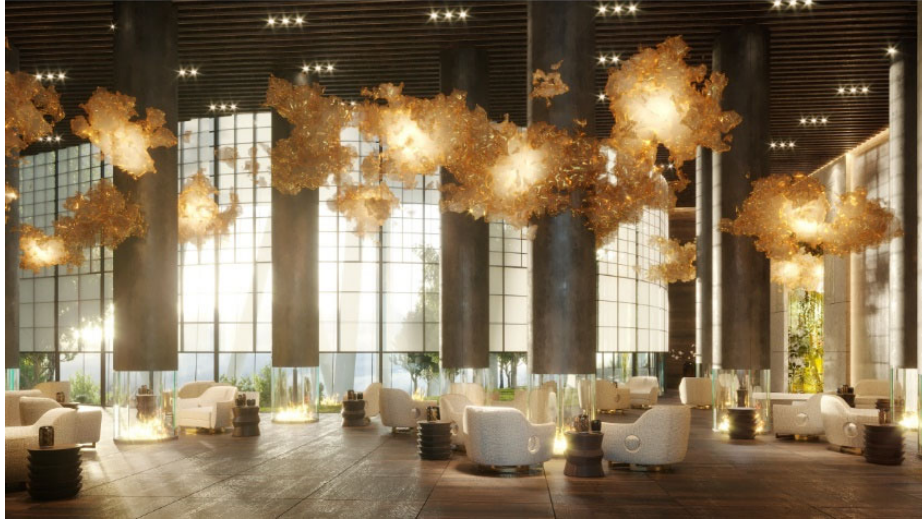
This release is distributed to: The Ministry of Land, Infrastructure, Transport and Tourism Press Club; the Ministry of Land, Infrastructure, Transport and Tourism Construction Specialty Publication Press Club, and the press club of the Tokyo Metropolitan Government.

TOKYO TORCH aims to become a "core of urban tourism" as the gateway to Tokyo and Japan, and the hotel is a key component of this. Located in the upper floors of Torch Tower, the tallest building in Japan, the hotel offers a panoramic view of Tokyo Bay, the city centre, as well as of Mt. Fuji. The "SKY HILL" will become the symbol of the hotel and the city itself, an oasis of tranquility where nature can be enjoyed through all one's senses, creating a unique experience fused with the vibrancy of the hotel.

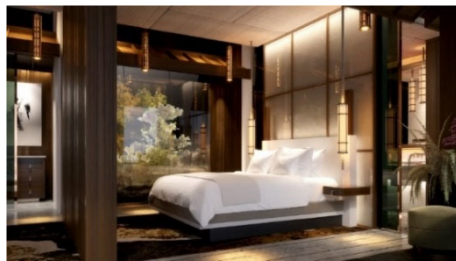
Combining these aspects with Dorchester Collection, which has carved its name in the history and culture of many parts of the world, the aim will be to create the only worldview with TOKYO TORCH, and a true luxury area in Tokyo/Japan that can be experienced nowhere else.



▲SKY HILL image



▲ Main lobby



▲ Guest room



▲ Entrance

*Note: The perspective drawings shown here are as of the design stage and may differ from the final construction result.

■Comments from project representatives

-Christopher Cowdray, chief executive officer of Dorchester Collection

‘This new hotel will become a beacon for Japan’s ultra-luxury hotel landscape and set new benchmarks. World-class architects will inspire with their symbolic design torch concept, lighting up not only the future of Tokyo and Japan but also the world. Tokyo has long been an integral part of our growth strategy given it is a gateway to Asia and its global significance, and to be partnering with the highly esteemed Mitsubishi Estate Co. Ltd. and Tokyo Century Corporation is a true honour. Their core values are perfectly aligned with ours given the vision of ‘a love for people, a love for the city’ and our ‘We Care’ philosophy.’

-Junichi Yoshida, President & Chief Executive Officer, Mitsubishi Estate Co., Ltd.

‘We are delighted to welcome the historic and traditional Dorchester Collection as our partner. We are confident that by infusing the culture and hospitality that Dorchester Collection has cultivated over the years, the hotel will provide a "one-of-a-kind experience" that is unique to this location.’

-Yoichiro Nakai, Deputy President and Executive Officer, Tokyo Century Corporation

‘It is a pleasure to have Dorchester Collection, which operates famous hotels around the world, become a part of TOKYO TORCH, a symbol of our partnership of more than a decade with Mitsubishi Estate. I believe the brand philosophy "one-of-a-kind experience” woven by Torch Tower as Japan’s tallest building and Dorchester Collection will make Tokyo and Japan newly compelling.’

■ About Dorchester Collection

DORCHESTER COLLECTION

Dorchester Collection is a portfolio of the world’s foremost luxury hotels and residences. The unique properties are all legendary in their own right, with rich heritages and worldwide reputations as places offering the most sought-after experiences of good living, charm, elegance, and unparalleled standards of service.

The current portfolio includes the following hotels:

THE DORCHESTER (London), 45 PARK LANE (London), COWORTH PARK (Ascot), LE MEURICE (Paris), HÔTEL PLAZA ATHÉNÉE (Paris), HOTEL PRINCIPE DI SAVOIA (Milan), HOTEL EDEN (Rome), THE BEVERLY HILLS HOTEL (Beverly Hills), HOTEL BEL-AIR (Los Angeles), THE LANA (Dubai, Opening 2023)

Luxury residences include:

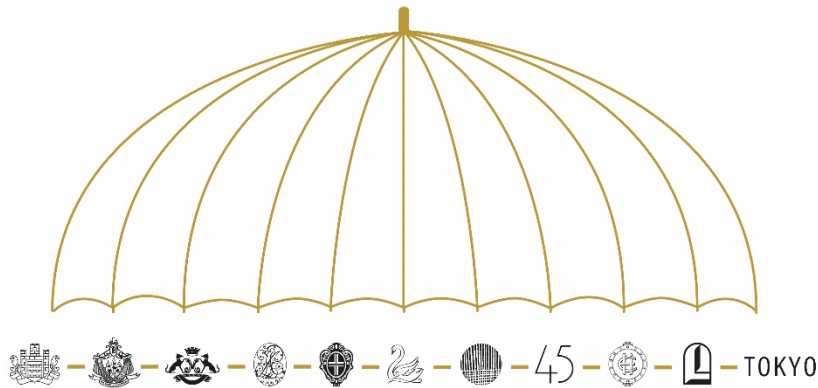
MAYFAIR PARK RESIDENCES (London), AVA AT PALM JUMEIRAH (Dubai), THE RESIDENCES (Dubai), ONE AT PALM JUMEIRAH (Dubai)

FACEBOOK [DC.Luxuryhotels](https://www.facebook.com/DC.Luxuryhotels) TWITTER [DC_LuxuryHotels](https://twitter.com/DC_LuxuryHotels) INSTAGRAM [DorchesterCollection](https://www.instagram.com/DorchesterCollection)

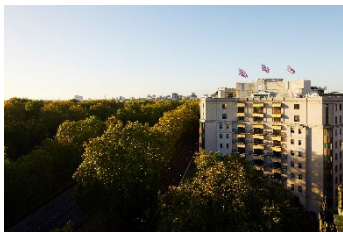
PINTEREST [DCluxuryhotels](https://www.pinterest.com/DCluxuryhotels) #DCmoments

For more information, please visit <https://www.dorchestercollection.com/en/>

)(*Dorchester Collection*



▲ Brand symbols of each Dorchester Collection hotel



▲ THE DORCHESTER (London)



▲ COWORTH PARK (Ascot)



▲ HÔTEL PLAZA ATHÉNÉE (Paris)



▲ LE MEURICE (Paris)



▲ THE BEVERLY HILLS HOTEL (Beverly Hills)



▲ HOTEL BEL-AIR (LA)

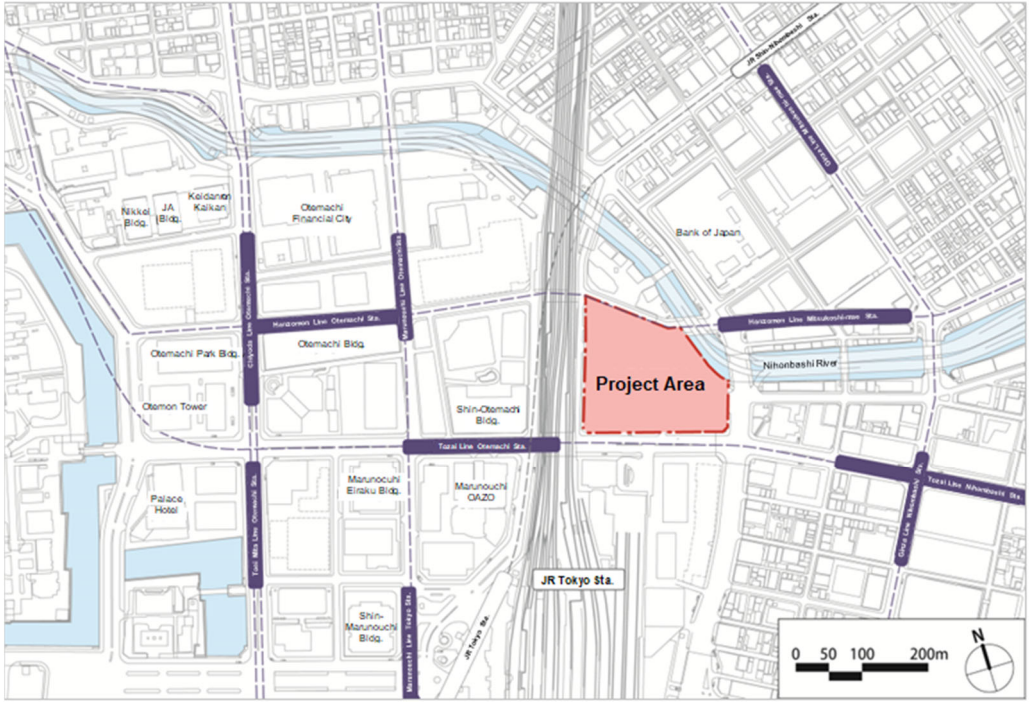
■Overview of the Hotel

- Location: Otemachi 2-chome, Chiyoda-ku, and Yaesu 1-chome, Chuo-ku, Tokyo
- Hotel floors: 53rd to 58th floors (provisional; subject to change as plans continue to be studied)
- Hotel floor area: approx. 21,400m²
- Number of guest rooms: 110 rooms (provisional)
- Provided facilities: Lobby lounge, all-day dining, specialty restaurants, banquet hall, fitness gym, spa, pool
- Start of construction: October 2023 (planned)
- Completion: FY2027 (planned)
- Hotel opening: FY2028 (planned)
- Note: The name of the hotel will be decided upon further consideration.

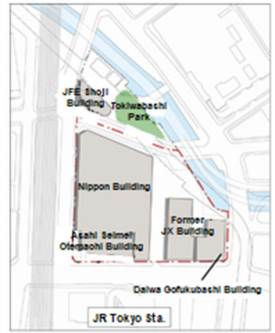
■Project Overview

Name of district	TOKYO TORCH				
Project name	Otemachi 2-chome Tokiwabashi area first class urban area redevelopment project (Project executor: Mitsubishi Estate Co., Ltd.)				
Site	Otemachi 2-chome, Chiyoda-ku and Yaesu 1-chome, Chuo-ku, Tokyo				
Site area	Approx. 31,400m ²				
Gross floor area	Approx. 740,000m ²				
Specifications of each structure	Tokiwabashi Tower (Tower A)	Torch Tower (Tower B)	Electrical substation (Building C)		Zenigamecho Building (Building D)
Primary uses	Offices, retail, parking, etc.	Offices, hotel, Grand Hall, rental housing retail, parking, etc.	Retail, electrical substation, parking, etc.		Offices, sewage pumping station, parking, etc.
Total floor area	Approx. 146,000m ²	Approx. 544,000m ²	Approx. 20,000m ²		Approx. 30,000m ²
No. of floors/ height	40 above-ground floors and 5 below-ground floors/ approx. 212 meters	62 above-ground floors and 4 below-ground floors/ approx. 390 meters	4 below-ground floors		9 above-ground floors and 3 below-ground floors/ approx. 53 meters
Start of construction (planned)	January 2018	FY2023	Phase I January 2018	Phase II FY2023	April 2017
Completion (planned)	End of June 2021	FY2027	End of June 2021	FY2027	End of March 2022
Design and supervision	Mitsubishi Jisho Design Inc.	Mitsubishi Jisho Design Inc.	Mitsubishi Jisho Design Inc.	Mitsubishi Jisho Design Inc.	Mitsubishi Jisho Design Inc. Nihon Suiko Sekkei Co., Ltd.
Construction	Toda Corporation	To be determined	Toda Corporation	To be determined	Sumitomo Mitsui Construction Co., Ltd.
Related rights holders	Mitsubishi Estate Co., Ltd., Tokyo Metropolitan Government Bureau of Sewerage, Daiwa Securities Group Inc., Isetan Mitsukoshi Holdings Ltd., TEPCO Power Grid, Inc., Otemachi Development Co., Ltd., Urban Renaissance Agency, Tokiwabashi Event Space SPC, TOKYO390 SPC, and others				

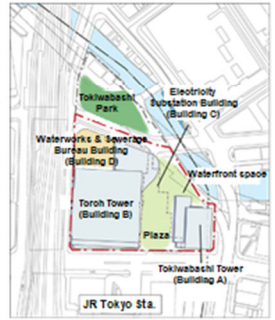
■ Project map and layout



▲ Project map



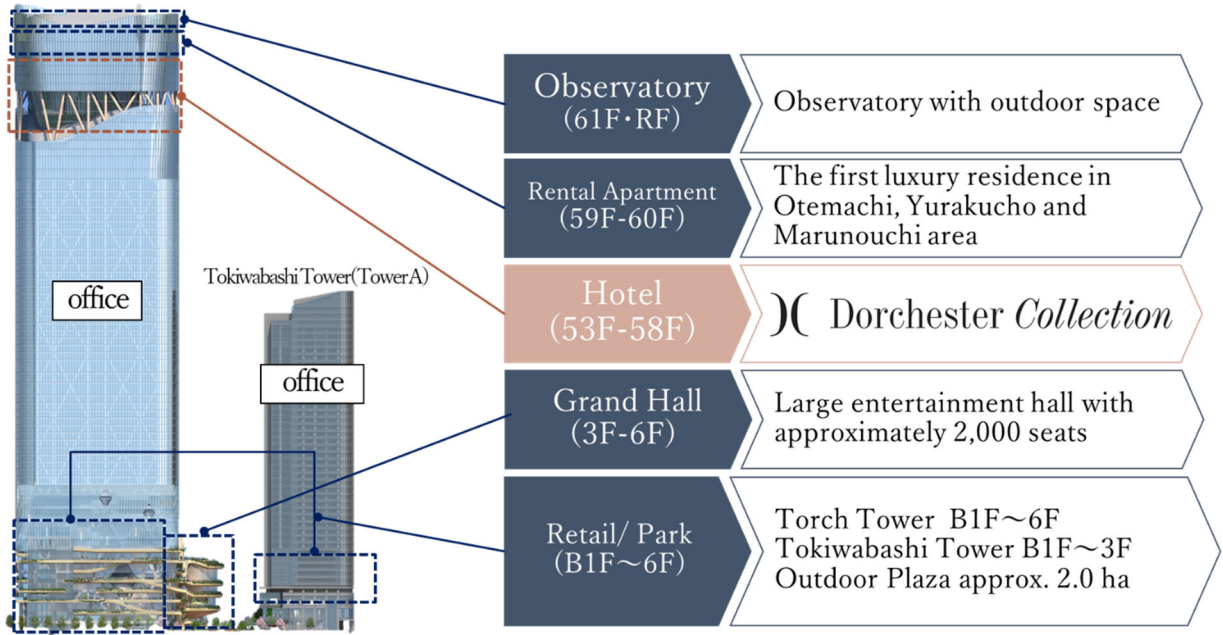
▲ Layout before redevelopment



▲ Layout after redevelopment

■ Torch Tower Project

Torch Tower(Tower B)



▲ Building use of Torch Tower

■ Project website

URL: <http://www.mec.co.jp/tokiwabashi/>

*Note: The information given in this press release is subject to change as studies and discussions continue.